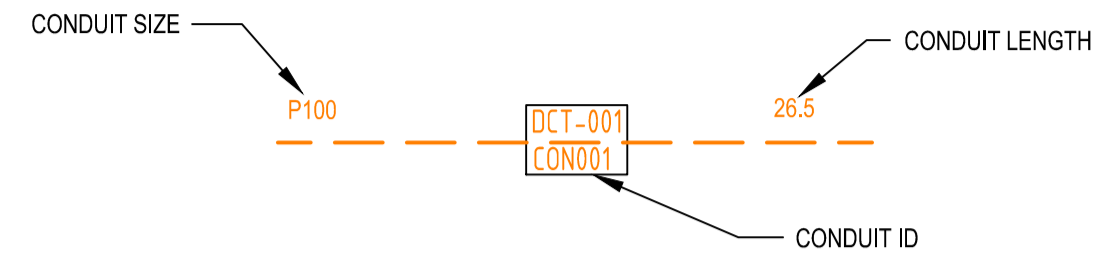


CONDUIT CONFIGURATION

CONDUITS AND DUCTS ARE IN LAYER:
 < L460 NBN Support - Underground >
 AND TERMINOLOGY CATEGORIZED INTO TWO GROUPS IN THE DRAWINGS AS PER BELOW:
 1- DUCT USED WITH LOCAL NETWORK
 2- CONDUIT USED WITH LEAD-IN DROPS
 ATTRIBUTES ATTACHED TO CONDUITS ARE AS SHOWN



NOTE:
 - P100 HAS AN INTERNAL DIAMETER OF 115 mm
 - P50 HAS AN INTERNAL DIAMETER OF 54.2 mm
 - P20 HAS AN INTERNAL DIAMETER OF 23.2 mm

LEGEND

	TRANSFORMER / KIOSK / PAD MOUNT SUB-STATION / POLE MOUNT TRANSFORMER		SHARED TRENCH
	FIBRE DISTRIBUTION HUB FDH CABINET		ZERO LOT PROPERTY BOUNDARY
	PIT-ID 2 ACO CABLEMATE TYPE 2 PLASTIC PIT OR SIMILAR		END CAP CONDUIT WITH STATION NO.
	PIT-ID 5 ACO CABLEMATE TYPE 5 PLASTIC PIT OR SIMILAR		CAP SERVICE CONDUIT (P50/P20) P20=P23 mm NBNC0 SERVICE CONDUIT
	PIT-ID 8 ACO CABLEMATE TYPE 8 PLASTIC PIT OR SIMILAR		LOCAL CONDUIT (P100/P50)
	PIT-ID 9 ACO CABLEMATE TYPE 9 PLASTIC PIT OR SIMILAR		EXISTING CONDUIT
	PIT-ID C8 EXISTING NBNC0 PIT		NBNC0 STAGE BOUNDARY
			NBNC0 LNC BOUNDARY

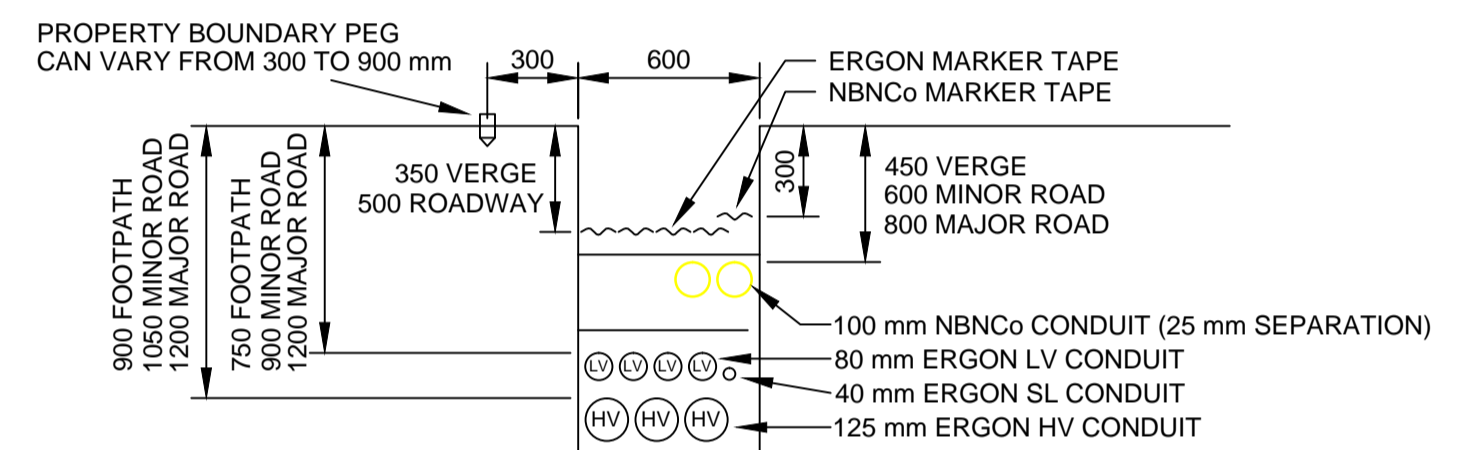
NOTE:

- PITS TO BE LOCATED CLEAR OF THE PILLAR EXCLUSION ZONE.
- PITS TO INCLUDE LID GASKET.
- SERVICE CONDUITS TO EXTEND 1m INSIDE THE FRONT PROPERTY BOUNDARY. FOR DISTANCES FROM SIDE PROPERTY BOUNDARY, REFER APPLICABLE PIT LAYOUT DETAILS OR SERVICE CONDUIT DETAIL FOR BOUNDARIES WITHOUT NBN PIT. CONTRACTORS TO TIE TELECOMMUNICATIONS CAUTION TAPE TO END OF SERVICE CONDUITS AND EXTEND TO ABOVE GROUND LEVEL FOR FUTURE CONDUIT LOCATION.
- CONDUITS TO ENTER AND EXIT AT ENDS OF PITS ONLY. LOCATE CONDUITS AS CENTRALLY IN PIT END WALLS AS POSSIBLE. MINIMUM SEPARATION BETWEEN CONDUITS TO BE 25 mm. REFER TO THE PIT END WALL DETAILS FOR ADDITIONAL REQUIREMENTS.
- MINIMUM COVER TO BE: 300 mm FOR SERVICE DROP CONDUITS, 450 mm IN VERGE, 600 mm UNDER LOCAL ROADS, AND 800 mm UNDER MAIN ROADS.
- CONDUITS ARE TO BE CLEANED AND PROVEN USING A MANDREL. AFTER TESTING INSTALL A SUITABLE DRAW ROPE AND CAP CONDUIT ENDS. SEAL CONDUITS AT PITS TO PREVENT ENTRY OF DUST AND MOISTURE.
- INSTALL NON CONDUCTIVE (METAL FREE) MARKER TAPE ABOVE ALL NBNC0 CONDUITS, 300 mm BELOW FINISHED GROUND LEVEL.
- REFER TO ERGON ENERGY STANDARD DRAWINGS 5228 AND 5168 SHEETS 1 TO 3 FOR SHARED TRENCH CROSS SECTIONS.
- REFER TO NBNC0 DOCUMENT NO. NBN-TE-CTO-194 (DEPLOYMENT OF THE NBN CO CONDUIT AND PIT NETWORK - GUIDELINES FOR DEVELOPERS) FOR DETAILED SPECIFICATION.
- GRADE TOP OF PIT TO MATCH VERGE / FOOTPATH.
- THERE ARE A TOTAL OF 21 RESIDENTIAL LOTS MADE UP OF 19 SINGLE DWELLINGS AND 2 POSSIBLE TRIPLEX LOTS, POSSIBLY TOTTALING 25 PREMISES.
- ALL OF THE STAGE IS TO BE FED FROM EXISTING FDH INSTALLED IN STAGE 1. REFER TO NBNC0 PROJECT NO: AYCA-E0ER5 FOR DETAILS..
- WHERE REQUIRED, SUPPLY AND INSTALL SERVICE AND ROAD CROSSING CONDUIT SHOWN IN THE PIT LAYOUTS.
- FOR PIT INSTALLATION, CUT INTO EXISTING NBNC0 CONDUIT AND CONNECT WITH BENDS AND TERMINATE INSIDE PIT.

STAFF WORKING ON THIS ESTIMATE PLEASE NOTE:
 The location of other authorities services which may affect this work have not been obtained by the estimator. Constructor to obtain service information before commencing.

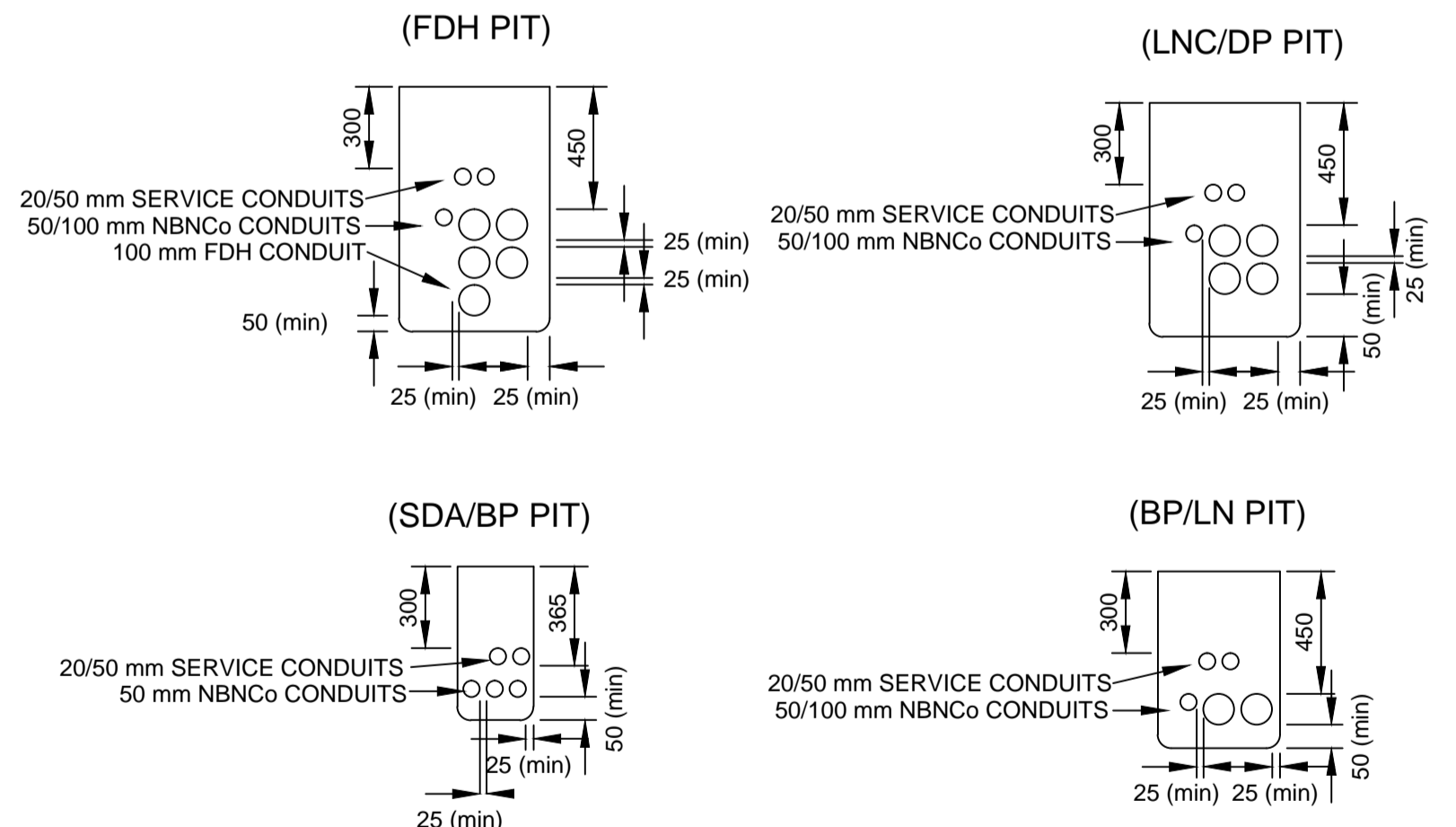
SAFETY FIRST
 SAFETY STARTS WITH YOU

PIT TYPE	PIT SIZE	LENGTH (mm)	WIDTH (mm)	DEPTH (mm)
SERVICE DROP ACCESS PIT / BOUNDARY PIT (MAXIMUM 50 mm CONDUIT ENTRY)	C2	650	280	565
BOUNDARY PIT / LOCAL NETWORK PIT	C5	700	450	650
LOCAL NETWORK CONNECTION PIT	C8	1360	555	860
DISTRIBUTION PIT	C8	1360	555	860
FDH PIT	C9	2000	555	900

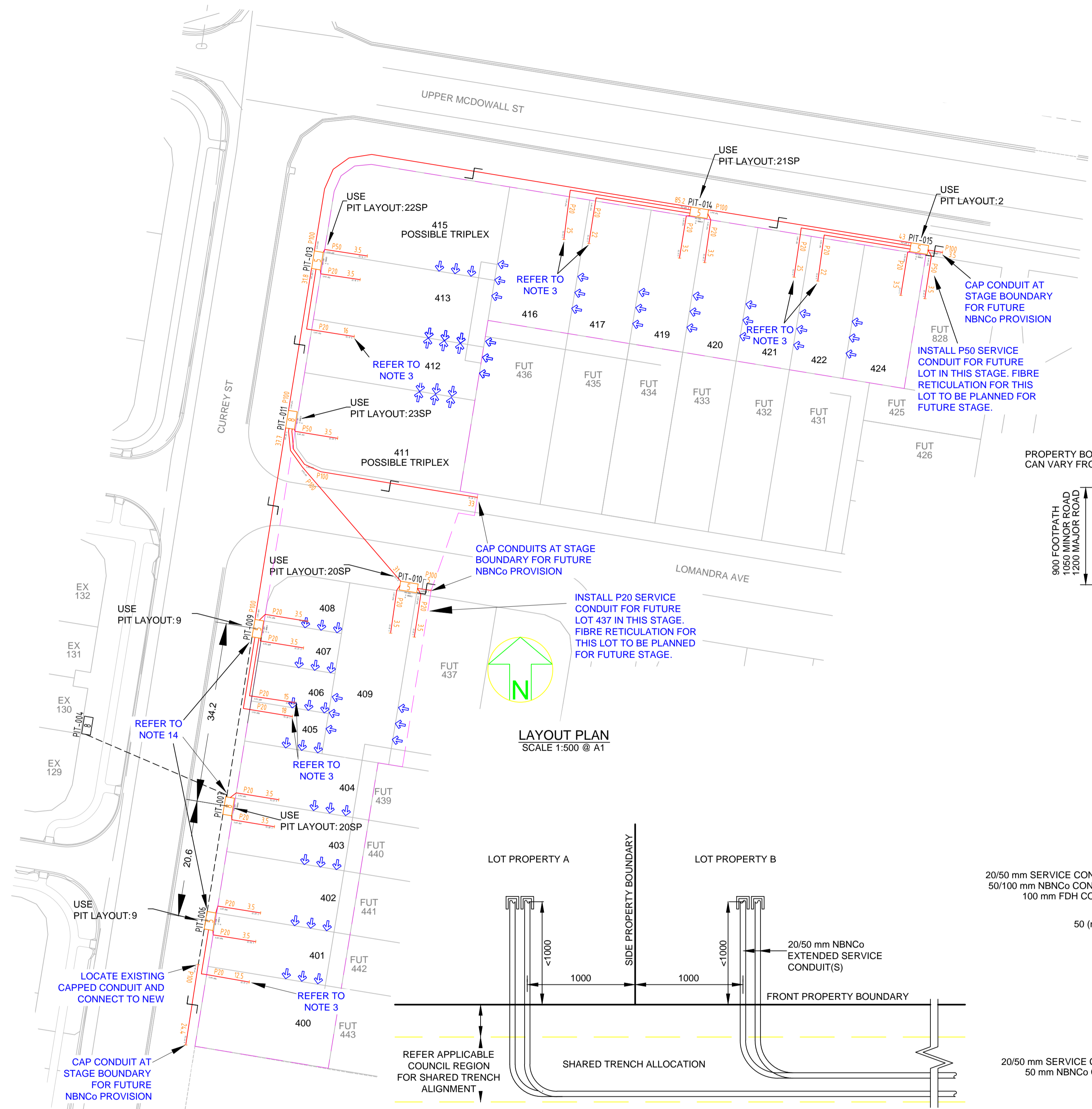


STANDARD TRENCH SECTION (MK)
 SCALE 1:25 @ A1

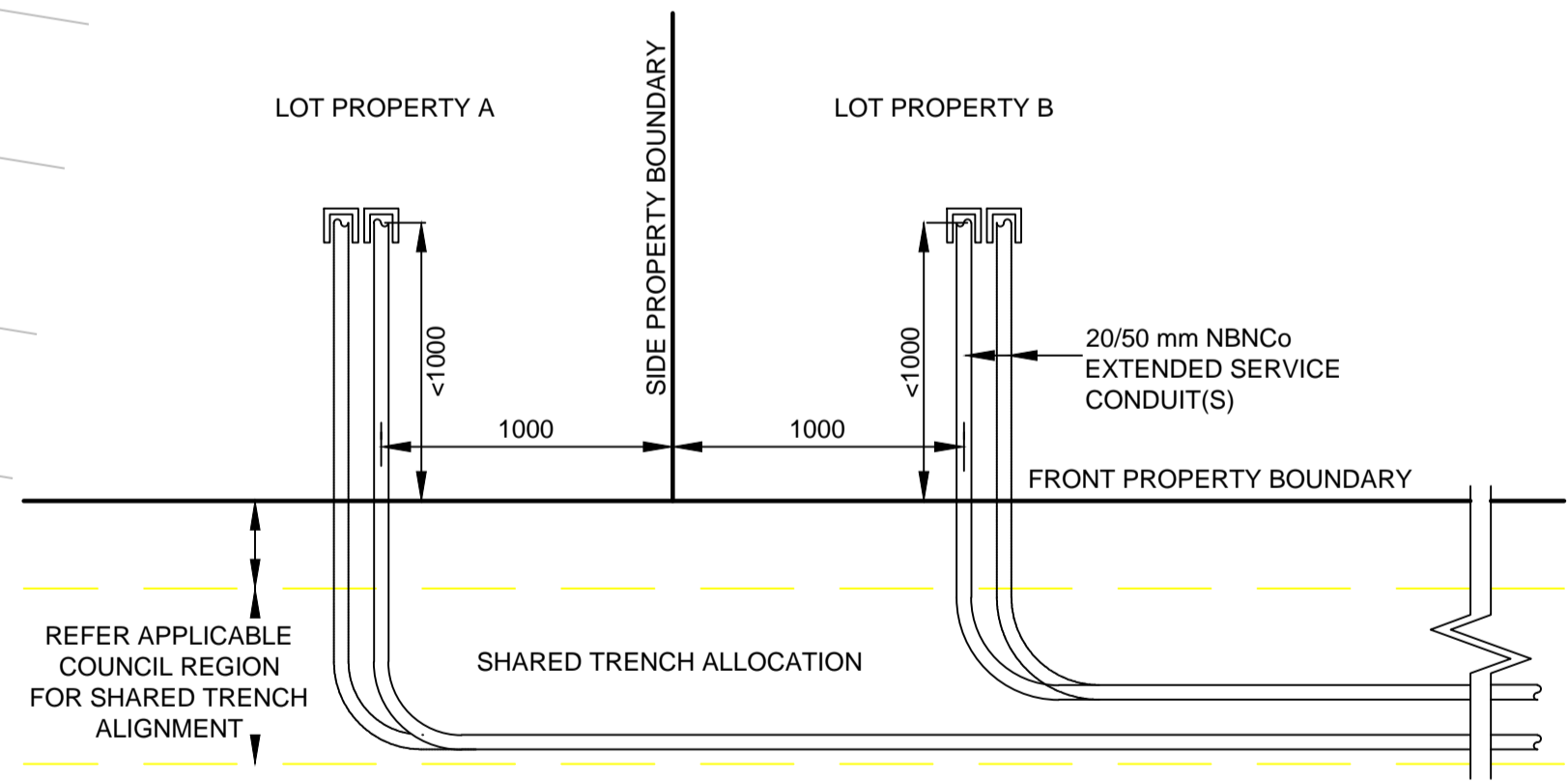
ERGON CONDUIT TYPE	PARALLEL SEPARATION (mm)	CROSSING SEPARATION (mm)
LV/SL	100	100
HV	300	100



TYPICAL PIT END WALL DETAILS
 SCALE 1:25 @ A1



LAYOUT PLAN
 SCALE 1:500 @ A1



SERVICE CONDUIT DETAIL FOR BOUNDARIES WITHOUT NBN PIT
 NOTE: - WHERE REQUIRED, MIRROR REVERSE (SCALE 1:25 @ A1)
 - REFER SITE PLAN FOR CORRECT SIZE AND BOUNDARY FOR SERVICE CONDUIT INSTALLATION.
 - WHERE SPECIFIED IN SITE PLAN, INSTALL ADDITIONAL SERVICE CONDUIT(S).

AS CONSTRUCTED

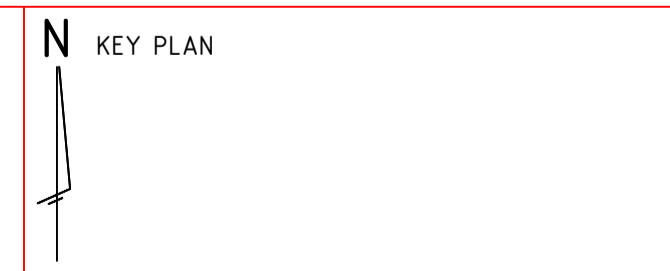
****ATTENTION****
CONSTRUCTORS DO NOT
 change or alter job specifications unless first checking with designer.

REV	DATE	DRAFTER	DESCRIPTION	APPROVED
-				
D	27/06/13	RB	AS CONSTRUCTED	
C	30/11/12	RB	AMENDED AS PER REVISED ELECTRICAL DESIGN	
B	19/11/12	RB	AMENDED AS PER NEW LOT LAYOUT	
A	12/06/12	RB	ISSUED FOR CONSTRUCTION	
2	24/05/12	RB	PITS 007, 009 AND 010 UPGRADED TO C8, AMENDED NOTE 9 AND 11.	
1	11/05/12	LD	FOR APPROVAL	

SIGNATURE	DATE
<input type="checkbox"/> DD	
<input type="checkbox"/> WD	
<input type="checkbox"/> AB	

QUALITY RECORD:
 NBNC0 DISCLAIMER:
 THIS DOCUMENT HAS BEEN PREPARED SOLELY FOR THE USE OF NBNC0 LIMITED (ABN 86 136 533 741) FOR USE IN MAINTAINING NBNC0 FACILITIES. IT HAS NOT BEEN CREATED FOR ANY OTHER USE. IT SHOULD NOT BE SCALED TO LOCATE NBNC0 ASSETS. NO WARRANTY IS GIVEN THAT THE INFORMATION IS ACCURATE OR COMPLETE.

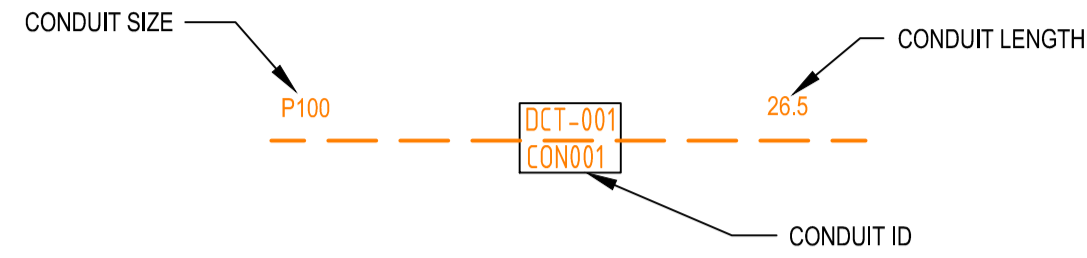
Suite 71/32 Collins Avenue, Edge Hill, QLD 4870
 Tel: (07) 4032 3311 Fax: (07) 4032 5633
 PO Box 664 North Cairns QLD 4870
 Email Address: admin@spaconslting.com.au
 SPA Consulting Engineers (QSL) Pty Ltd. a/c/o. (Incorporated)



DRAWING TITLE: CLEARVIEW RISE STAGE 4A NBNC0 PIT AND PIPE DESIGN SITE PLAN, PIT AND TRENCH DETAILS AND EXTENDED SERVICE CONDUIT DETAIL			
STATE: QLD	REGION: MK		
FSA:	FSAM:	FDA:	
PROJECT No: AYCA-HDU9B			
CADREF No: 2094-101			
SCALE AS SHOWN	SHEET No. 1	OF 2	REV. D

CONDUIT CONFIGURATION

CONDUITS AND DUCTS ARE IN LAYER:
 < L460 NBN Support - Underground >
 AND TERMINOLOGY CATEGORISED INTO TWO GROUPS IN THE DRAWINGS AS PER BELOW:
 1- DUCT USED WITH LOCAL NETWORK
 2- CONDUIT USED WITH LEAD-IN DROPS
 ATTRIBUTES ATTACHED TO CONDUITS ARE AS SHOWN



NOTE:
 - P100 HAS AN INTERNAL DIAMETER OF 115 mm
 - P50 HAS AN INTERNAL DIAMETER OF 54.2 mm
 - P20 HAS AN INTERNAL DIAMETER OF 23.2 mm

LEGEND

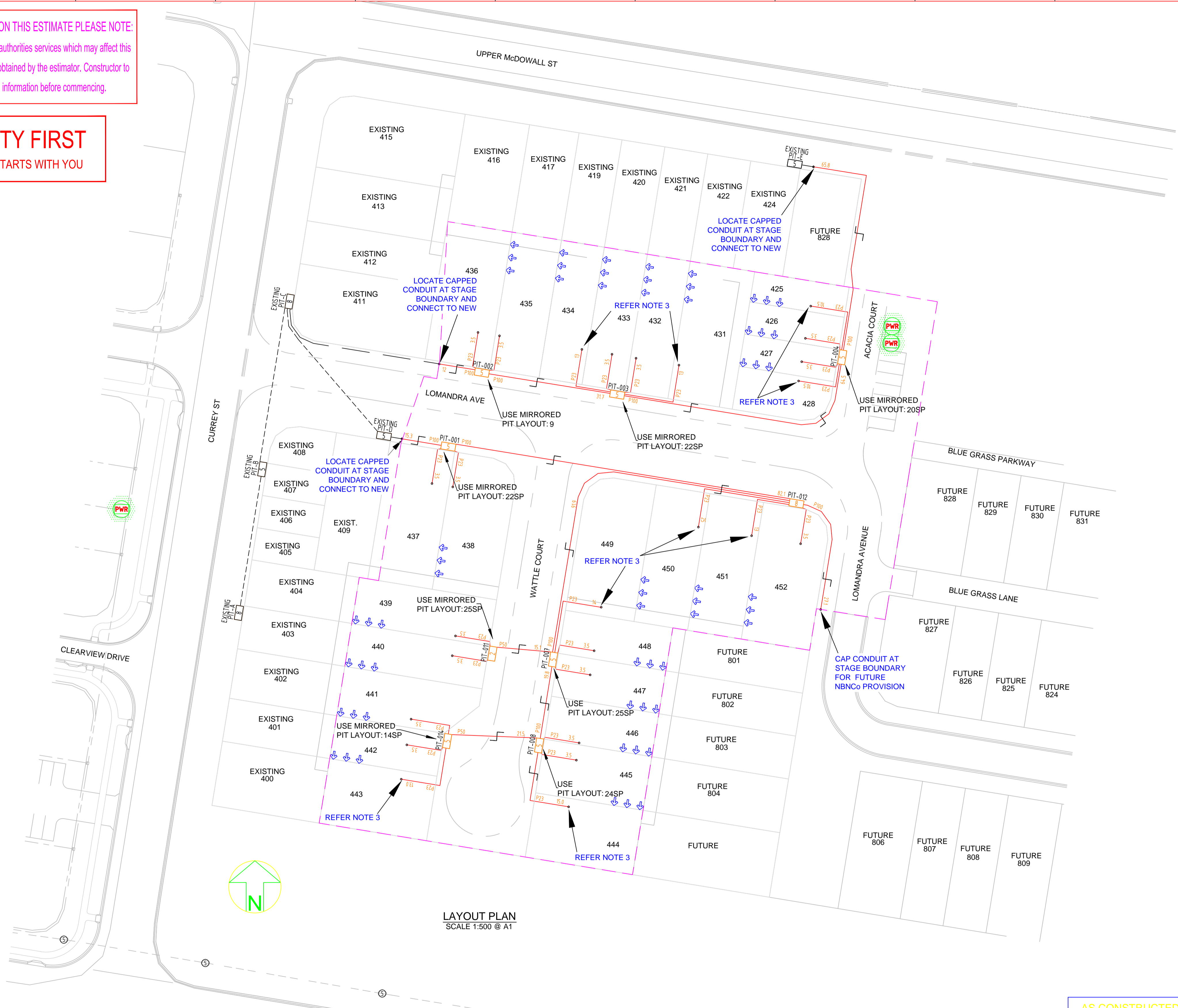
	TRANSFORMER / KIOSK / PAD MOUNT SUB-STATION / POLE MOUNT TRANSFORMER		SHARED TRENCH
	FIBRE DISTRIBUTION HUB FDH CABINET		ZERO LOT PROPERTY BOUNDARY
	ACO CABLEMATE TYPE 2 PLASTIC PIT OR SIMILAR		END CAP CONDUIT WITH STATION NO.
	ACO CABLEMATE TYPE 5 PLASTIC PIT OR SIMILAR		CAP SERVICE CONDUIT (P50/P20) P20=P23 mm NBNCo SERVICE CONDUIT
	ACO CABLEMATE TYPE 8 PLASTIC PIT OR SIMILAR		LOCAL CONDUIT (P100/P50)
	ACO CABLEMATE TYPE 9 PLASTIC PIT OR SIMILAR		EXISTING CONDUIT
	EXISTING NBNCo PIT		NBNCo STAGE BOUNDARY
			NBNCo LNC BOUNDARY

NOTE:

- PITS TO BE LOCATED CLEAR OF THE PILLAR EXCLUSION ZONE.
- PITS TO INCLUDE LID GASKET.
- SERVICE CONDUITS TO EXTEND 1m INSIDE THE FRONT PROPERTY BOUNDARY. FOR DISTANCES FROM SIDE PROPERTY BOUNDARY, REFER APPLICABLE PIT LAYOUT DETAILS OR SERVICE CONDUIT DETAIL FOR BOUNDARIES WITHOUT NBN PIT. CONTRACTORS TO TIE TELECOMMUNICATIONS CAUTION TAPE TO END OF SERVICE CONDUITS AND EXTEND TO ABOVE GROUND LEVEL FOR FUTURE CONDUIT LOCATION.
- CONDUITS TO ENTER AND EXIT AT ENDS OF PITS ONLY. LOCATE CONDUITS AS CENTRALLY IN PIT END WALLS AS POSSIBLE. MINIMUM SEPARATION BETWEEN CONDUITS TO BE 25 mm. REFER TO THE PIT END WALL DETAILS FOR ADDITIONAL REQUIREMENTS.
- MINIMUM COVER TO BE: 300 mm FOR SERVICE DROP CONDUITS, 450 mm IN VERGE, 600 mm UNDER LOCAL ROADS, AND 800 mm UNDER MAIN ROADS.
- CONDUITS ARE TO BE CLEANED AND PROVEN USING A MANDREL. AFTER TESTING INSTALL A SUITABLE DRAW ROPE AND CAP CONDUIT ENDS. SEAL CONDUITS AT PITS TO PREVENT ENTRY OF DUST AND MOISTURE.
- INSTALL NON CONDUCTIVE (METAL FREE) MARKER TAPE ABOVE ALL NBNCo CONDUITS, 300 mm BELOW FINISHED GROUND LEVEL.
- REFER TO ERGON ENERGY STANDARD DRAWINGS 5228 AND 5168 SHEETS 1 TO 3 FOR SHARED TRENCH CROSS SECTIONS.
- REFER TO NBNCo DOCUMENT NO. NBN-TE-CTO-194 (DEPLOYMENT OF THE NBN CO CONDUIT AND PIT NETWORK - GUIDELINES FOR DEVELOPERS) FOR DETAILED SPECIFICATION.
- GRADE TOP OF PIT TO MATCH VERGE / FOOTPATH.
- THERE ARE A TOTAL OF 26 SINGLE DWELLING UNITS OVER 26 LOTS.
- ALL OF THE STAGE IS TO BE FED FROM EXISTING FDH INSTALLED IN STAGE 1. REFER TO NBNCo PROJECT NO: AYCA-E0ER5 FOR DETAILS.
- WHERE REQUIRED, SUPPLY AND INSTALL SERVICE AND ROAD CROSSING CONDUIT SHOWN IN THE PIT LAYOUTS.
- WHERE CONDUIT BURIAL DEPTH IS LESS THAN THAT SPECIFIED IN THE NBNCo DEPLOYMENT OF CONDUIT AND PIT NETWORK GUIDELINES, SUPPLY AND INSTALL CONCRETE COVER (FOR VERGE AND FOOTPATH) / CONCRETE ENCASMENT (FOR ROADWAYS). ENSURE THAT MINIMUM SEPARATION TO ALL OTHER SERVICES IS MAINTAINED.
- SUPPLY AND INSTALL ADDITIONAL DEVIATING CONDUIT BENDS TO ACHIEVE THE INCREASED / DECREASED BURIAL DEPTH REQUIRED TO AVOID CLASH WITH OTHER SERVICES.

STAFF WORKING ON THIS ESTIMATE PLEASE NOTE:
 The location of other authorities services which may affect this work have not been obtained by the estimator. Constructor to obtain service information before commencing.

SAFETY FIRST
 SAFETY STARTS WITH YOU

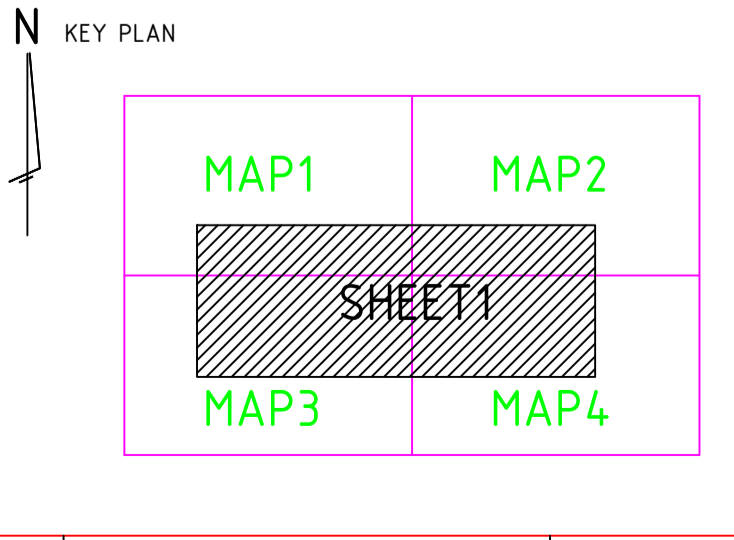


****ATTENTION****
 CONSTRUCTORS DO NOT
 change or alter job
 specifications unless first
 checking with designer.

REV	DATE	DRAFTER	DESCRIPTION	APPROVED
D	27/06/13	RB	AS CONSTRUCTED	
C	13/12/12	RB	UPGRADED PIT-014 TO 5 PIT AS PER NBNCo REMARKS	
B	11/12/12	RB	AMENDED TO SUIT LOT RECONFIGURATION	
A	20/08/12	RB	ISSUED FOR CONSTRUCTION	
1	10/08/12	RB	FOR APPROVAL	

NBNCo APPROVAL RECORD:
 SIGNATURE _____ DATE _____
 DD
 WD
 AB

QUALITY RECORD:
 NBNCo DISCLAIMER
 THIS DOCUMENT HAS BEEN PREPARED SOLELY FOR THE USE OF NBNCo LIMITED (ABN 86 136 533 741) FOR USE IN MAINTAINING NBNCo FACILITIES. IT HAS NOT BEEN CREATED FOR ANY OTHER USE. IT SHOULD NOT BE SCALED TO LOCATE NBNCo ASSETS. NO WARRANTY IS GIVEN THAT THE INFORMATION IS ACCURATE OR COMPLETE.



DRAWING TITLE:
**CLEARVIEW RISE STAGE 4B
 NBNCo PIT AND PIPE DESIGN
 SITE PLAN**

STATE: QLD REGION: MK
 FSA: FSAM: FDA:
 PROJECT No: AYCA-H0UEC
 CADREF No: 2096-T01
 SCALE: AS SHOWN SHEET No: 1 OF 3 REV: D

AS CONSTRUCTED